



Style #221L...\$72  
Style #222L...\$84



Style #106... \$86



Style #S...\$82  
Style #L...\$95

**Our Best-selling Bags in 2008 Khaki Color Combinations**

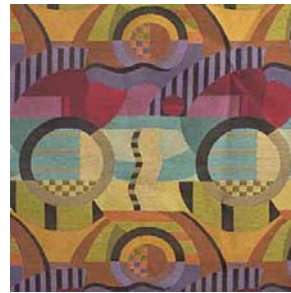
| Style | Size                     | Straps                 | Interior Pockets | price |
|-------|--------------------------|------------------------|------------------|-------|
| 221L  | 8" h x 12" w x 2.25" d   | Single, adjusts 20-58" | 4 open           | \$72  |
| 222L  | 9" h x 13.5" w x 2.25" d | Single, adjusts 20-58" | 1 zipper, 2 open | \$84  |
| 106   | 8.5" h x 10" w x 3" d    | Single, adjusts 20-58" | 1 zipper, 2 open | \$86  |
| S     | 11" h x 13" w x 4" d     | Two 30" straps         | 4 open           | \$82  |
| L     | 13.5" h x 16" w x 4" d   | Two 30" straps         | 5 open           | \$95  |



G9 Klimt abstract



G15 Sgt Pepper Pastel



G24 Kandinsky



G47 Lavender leaf swirl



G76 Rothko abstract



G91 Lavender Klimt



G92 Blue Discs



G93 Cream Discs



S71 Peach/Mint soft leaves



S72 Chenille: Cream, lav, blue



S73 Tan Navaho Abstract



S78 Taupe Brocade